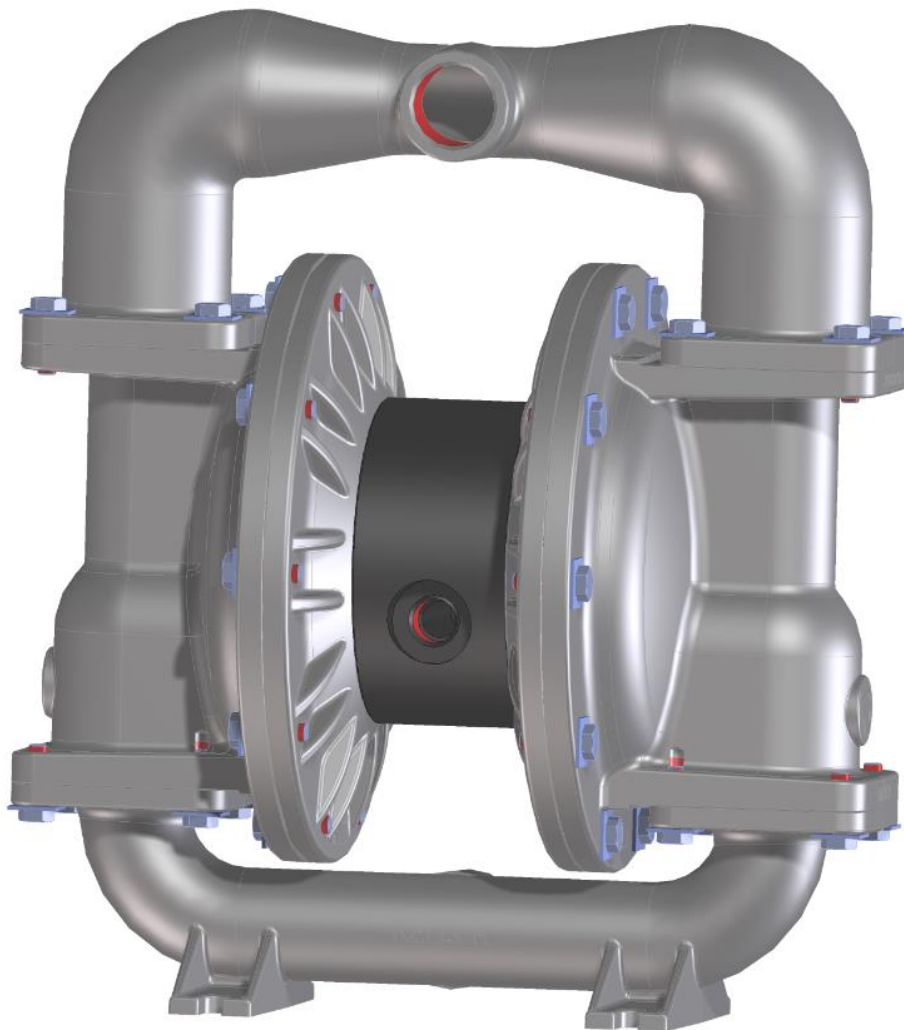




KELLER Pumps

Datasheet Air Operated Diaphragm Pump

WK40 / XWK40



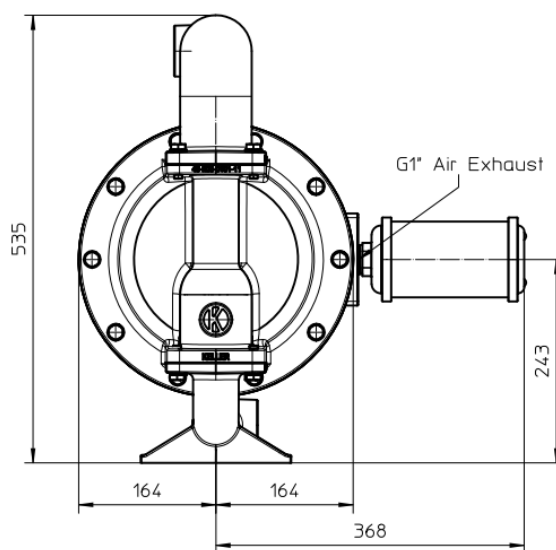
English

WILHELM KELLER GmbH, Herdweg 1, D-72147 Nehren
www.keller-pumpen.de, info@keller-pumpen.de,
Service-Hotline: +49 (0) 7473 / 9449-0

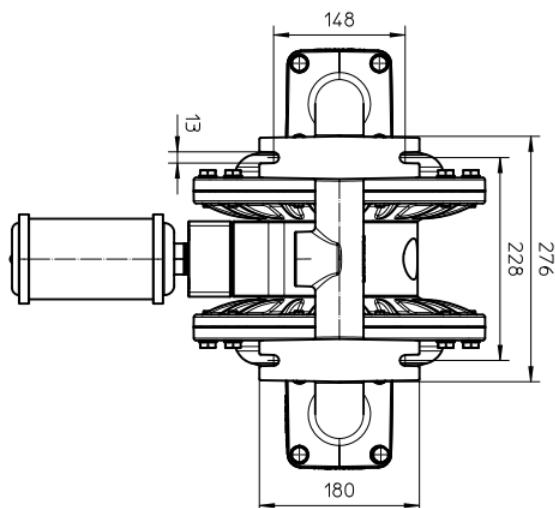
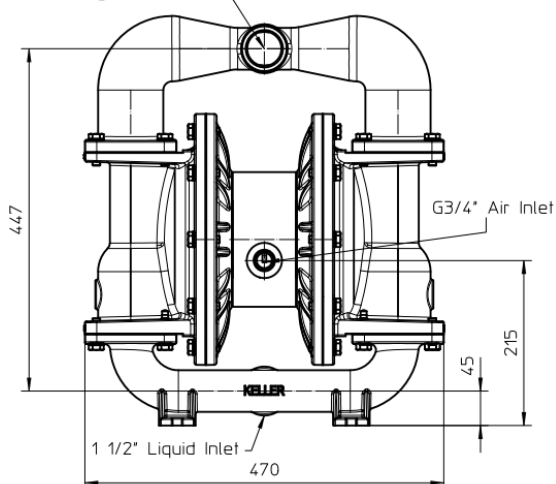


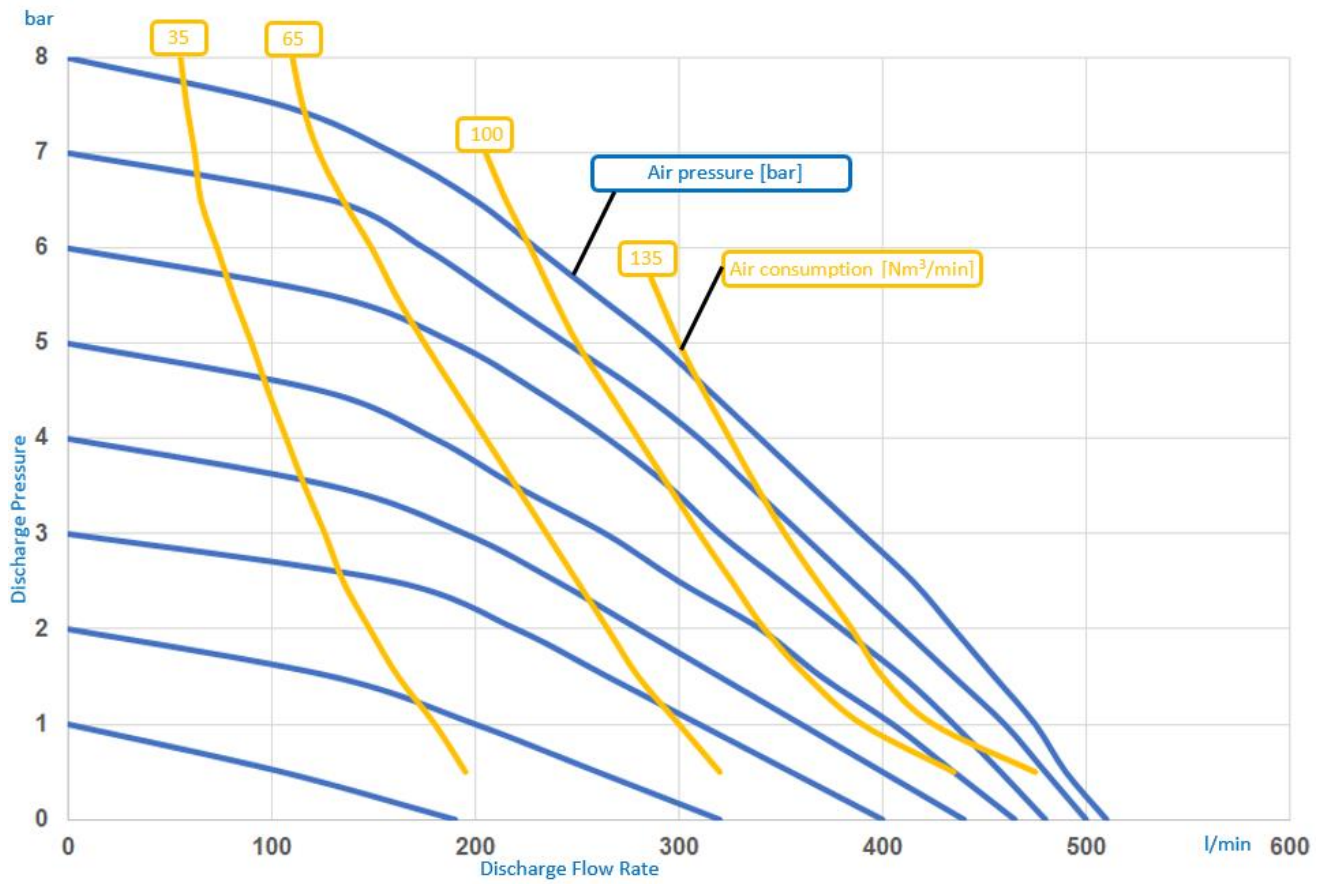
WILHELM KELLER GmbH & Co.KG, Herdweg 1, D-72147 Nehren
www.keller-pumpen.de

Technical data	WK40 XWK40
Max. flow rate	510 l/min
Max. discharge pressure	8 bar
Connection on the media side	1 1/2"
Air inlet	G3/4"
Dry suction capacity	5.5 m
Ball material EPDM, NBR, FKM	5.5 m
Ball material PTFE	5.0 m
Wet suction capacity	9,0 m
Max. solid particle size	10 mm
Weight aluminum	35 kg
Weight stainless steel	58 kg
Air pressure	8 bar
Volume per single stroke	1.2 l/Hub



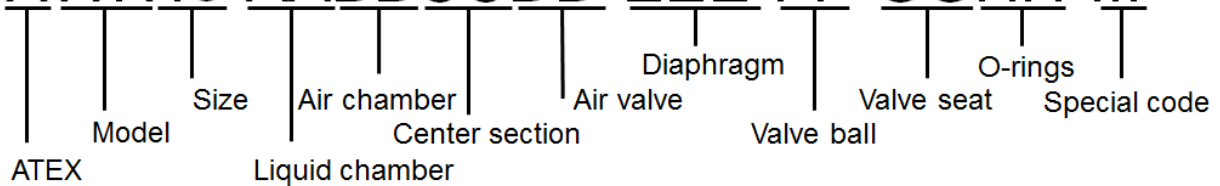
1 1/2" Liquid Discharge





Performance of pump with water at 20°C.

XWK40-AABBCCDD-EEE-FF-GGHH-III



Model

WK	Standard
XWK	ATEX - Version

Size - connection nominal width

Nominal	Connection size
40	1 1/2"

Liquid chamber (In contact with pumping medium)

AA	Material
AL	Aluminium
SS	Stainless steel

Air chamber

BB	Material
AL	Aluminium
SS	Stainless steel

Center section

CC	Material
PE	Polyethylene

Air valve

DD	Material
PT	PET (Standard)
MV	Solenoid valve
OV	Without valve

Diaphragm (In contact with pumping medium)

EEE	Material
TEC	PTFE composite membrane with
BNC	NBR composite membrane
EPC	EPDM composite membrane
VTC	FKM composite membrane

Valve ball (In contact with pumping medium)

FF	Material
TF	PTFE
BN	NBR
EP	EPDM
VT	FKM

Valve seat (In contact with pumping medium)

GG	Material
AL	Aluminium
SS	Stainless steel
BN	NBR
EP	EPDM

O-rings (In contact with pumping medium)

HH	Material
TF	PTFE
BN	NBR
EP	EPDM
VT	FKM

Special code

004 = BSPT thread, centre ported horizontal

005 = NPT thread, centre ported horizontal

006 = DIN flange, centre ported horizontal

007 = ANSI flange, centre ported horizontal